

Punjabi Indic Input 2 - User Guide

Contents

| | |
|---|-----------|
| WHAT IS PUNJABI INDIC INPUT 2? | 3 |
| SYSTEM REQUIREMENTS..... | 3 |
| TO INSTALL PUNJABI INDIC INPUT 2 | 3 |
| TO USE PUNJABI INDIC INPUT 2 | 4 |
| SUPPORTED KEYBOARDS | 5 |
| PUNJABI TRANSLITERATION | 5 |
| <i>Keyboard Rules</i> | 5 |
| PUNJABI INSCRIPT..... | 7 |
| PUNJABI TYPEWRITER | 8 |
| TOOL SETTING OPTIONS | 9 |
| ON-THE-FLY HELP..... | 9 |
| SHOW KEYBOARD | 9 |
| SWITCH TO ENGLISH/PUNJABI | 10 |
| HELP | 10 |
| TROUBLESHOOTING | 11 |
| TO UNINSTALL PUNJABI INDIC INPUT 2 | 12 |

What is Punjabi Indic Input 2?

Punjabi Indic Input 2 provides a very convenient way of entering text in Punjabi Language using the English QWERTY keyboard in any editing application (Office Application/WordPad /Notepad) that supports Text Services. Punjabi Indic Input 2 tool will be packaged as a setup and running the setup will invoke the services. The tool supports all popular keyboard layouts.

System Requirements

Windows Vista

Windows 7

*Tool is compatible with equivalent 64-bit Operating Systems mentioned above.

To Install Punjabi Indic Input 2

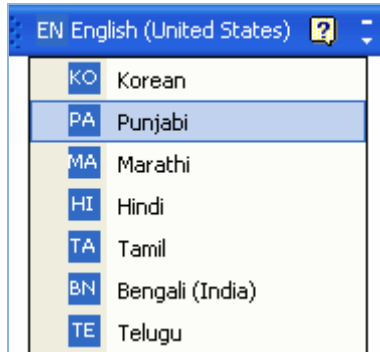
Installation of the Punjabi Indic Input 2 is a very easy process that takes less than two minute to complete.

Run or double click **Punjabi Indic Input 2 Setup**. The setup wizard will guide you through the installation process. Once the installation process is complete, **Punjabi Indic Input 2 has been successfully installed** will be displayed.

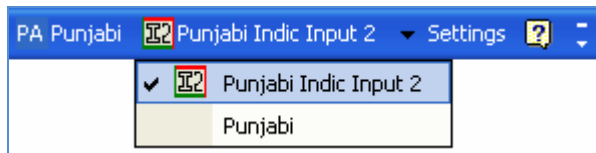
Note: On Windows Vista and Windows 7, if your user login does not have administrative privileges or is not included in the user group of administrators right click the "Setup.exe" icon and select "Run as Administrator".

To Use Punjabi Indic Input 2

1. Start any Office application, including WordPad or Notepad.
2. Click the Language Indicator located in the System Tray on the right side of the Windows taskbar or on Language bar as shown below and select **PA-Punjabi**.



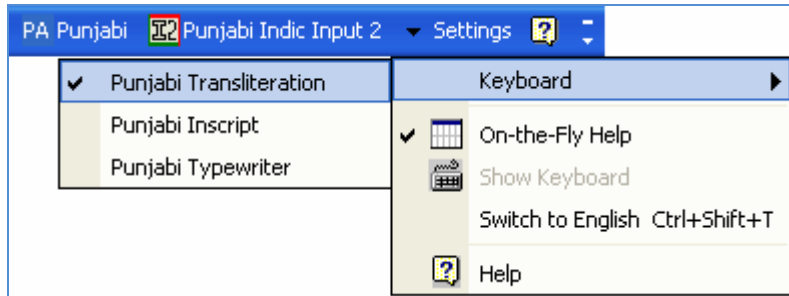
3. Select **Punjabi Indic Input 2** from the shortcut menu that appears. The PC is now ready to start typing in Punjabi.



Note: If you are unable to view Language bar on your PC [Click Here](#).

Supported Keyboards

Punjabi Indic Input 2 supports various types of Keyboards. Click **Settings** Icon and select **Keyboard**. Choose keyboard layout of your choice from list of available keyboards.



Punjabi Transliteration

User can type his message in Roman using the Standard English keyboard, which is transliterated on-the-fly to Punjabi. It works on the logic of phonetics and is most effective when user write the word the way it is spoken.

Keyboard Rules

| Vyanjan (Consonants) | | | | | | | | | |
|----------------------|----------|---|------|---|----|---|-------|----|-----|
| ਕ | ka,ca,qa | ਖ | kha | ਗ | ga | ਘ | gha | ਙ | Nga |
| ਚ | cha | ਛ | chha | ਜ | ja | ਝ | jha | ਞ | Nja |
| ਟ | Ta | ਠ | Tha | ਡ | Da | ਢ | Dha | ਣ | Na |
| ਤ | ta | ਥ | tha | ਦ | da | ਧ | dha | ਨ | na |
| ਪ | pa | ਫ | pha | ਬ | ba | ਭ | bha | ਮ | ma |
| ਯ | ya | ਰ | ra | ਲ | la | ਵ | va,wa | ਸ਼ | sha |
| ਸ਼ | sha | ਸ | sa | ਹ | ha | | | | |

| Swar (Vowels) | | | | | | | | | | | |
|---------------|---------|---|----|---|-------|---|---------|---|-------|---|----|
| ਅ | a | ਆ | aa | ਇ | i | ਈ | ee,ii,l | ਉ | u | ਐ | a^ |
| ਊ | oo,uu,U | ਏ | e | ਐ | ai,ei | ਓ | o | ਔ | au,ou | | |

Example:

| Input | Output |
|----------|--------|
| oushdhee | ਐਸ਼ਧੀ |
| aitawaar | ਐਤਵਾਰ |

| Matras | | | | | | | | | |
|--------|----|---|-------|---|---------|---|-------|---|---------|
| ਾ | aa | ਿ | i | ੀ | ee,ii,I | ੂ | u | ੁ | oo,uu,U |
| ੇ | e | ੈ | ai,ei | ੌ | o | ੌ | au,ou | | |

| Example: | |
|-----------|---------|
| Input | Output |
| anukoolan | ਅਨੁਕੂਲਨ |
| silaaee | ਸਿਲਾਈ |

| Anuswara (bindi), Tippi, Addak | | | | | |
|--------------------------------|---|---|---|---|----|
| ੰ | ^ | ੰ | ^ | ੱ | ^^ |

| Example: | |
|-----------|--------|
| Input | Output |
| leTavee^ | ਲੇਟਵੀਂ |
| panjaabee | ਪੰਜਾਬੀ |
| pattara | ਪੱਤਰ |

Note:

- If TIPPI is explicitly made use ^ sign. Else n followed by "aa, ee, e, ai, o, au" will give BINDI. In all other cases it will give TIPPI.
- ** Addak is formed by repeating consonants. For explicit Addak use ^^ after the consonant.

| Conjuncts Example: | |
|--------------------|-----------|
| Input | Output |
| prateelipee | ਪ੍ਰਤੀਲਿਪੀ |
| svei ghaata | ਇਜਾਜ਼ਤ |

| Nukta Consonants: | | | | | | | | | |
|-------------------|-----|---|---|---|---|---|----|---|---|
| ਖ | Kha | ਗ | G | ਜ | z | ੜ | D_ | ਫ | F |

| Example: | |
|----------|--------|
| Input | Output |
| Garajee | ਗਰਜੀ |
| ijaazata | ਇਜਾਜ਼ਤ |

| Half 'H' Example: | |
|-------------------|---------|
| Input | Output |
| chinnHha | ਚਿੰਨ੍ਹ |
| 'khaD_Hhavaa^ | ਖੜ੍ਹਵਾਂ |

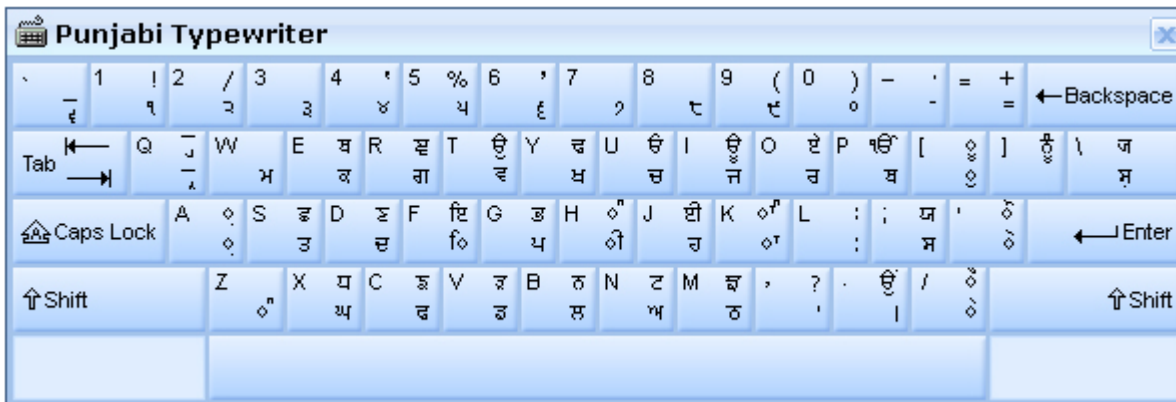
| Special Rules | |
|--|---|
| When consonant is followed by a consonant do not append halant in between the two except in the following cases(ra,va,ya) | |
| Rakar rule: If any consonant is followed by 'r' or 'v' or 'y' append halant in between the consonant and 'ra'/'va'/'ya' to form consonant rakar form. | prateelipee ਪ੍ਰਤੀਲਿਪੀ svei ghaata ਸ੍ਵੈ ਘਾਤ |
| Addak rule: If any consonant is followed by the same consonant append 'addak' in between the two consonants. | pattara ਪੱਤਰ |
| Half Ha rule: If any consonant is followed by capital 'H' append 'halant in between the consonant and 'ha'. Example: D_Ha -> ਡ੍ਹ and nHaa -> ਨ੍ਹਾਂ | chinnHha ਚਿੰਨ੍ਹ |
| Consonant Tippi - Anuswar Rule: If 'n' or 'm' is followed by a consonant, replace it with TIPPI. Exceptional cases: 'ny' (na followed by ya), nm (na followed by ma) and nn (na followed by na). | panjaabee ਪੰਜਾਬੀ |
| Vowel Tippi - Bindi Rule: Tippi after a matra can be obtained by pressing "^". Caret ^ after "aa, ee, e, ai, o, au" will give BINDI. IN all other cases it will give TIPPI. | leTavee^ ਲੇਟਵੀਂ |
| Halant Rule: If halant is needed ~ (tilde) should be typed. | |
| Explicit Addak Rule: If addak is needed ^^ (double caret) should be typed. | |
| To type Roman Numerals (Numbers), use the Numpad Keys of the Keyboard with Caps Lock Key ON. | 1,2,3,...9,0. |
| To type Lingual Numerals (Numbers), use the Numpad Keys of the Keyboard with Caps Lock Key OFF. | ੦, ੧, ੨, ੩, ੪, ੫, ੬, ੭, ੮, ੯ |

Punjabi Inscript



| Special Rules | |
|---|------------------------------|
| consoA + halant(d) + consoB = conjunct | ਕ + ੍ਰ = ਕ੍ਰ |
| consoA + halant(d) + Ctrl+Shift+1 + consoB = disjoint conjunct | ਖ + ੍ + Ctrl+Shift+1+ਰ = ਖ੍ਰ |
| consoA + halant(d) + Ctrl+Shift+2 + consoB = disjoint conjunct | ਖ + ੍ + Ctrl+Shift+2+ਰ = ਖ੍ਰ |
| To get 'Ek Omkar' use X followed by 'J'. | X' + 'J' = ੲੳ |
| To type Roman Numerals (Numbers), use the Numpad Keys of the Keyboard with Caps Lock Key ON. | 1, 2, 3....9, 0. |
| To type Lingual Numerals (Numbers), use the Numpad Keys of the Keyboard with Caps Lock Key OFF. | ੦, ੧, ੨, ੩, ੪, ੫, ੬, ੭, ੮, ੯ |

Punjabi Typewriter



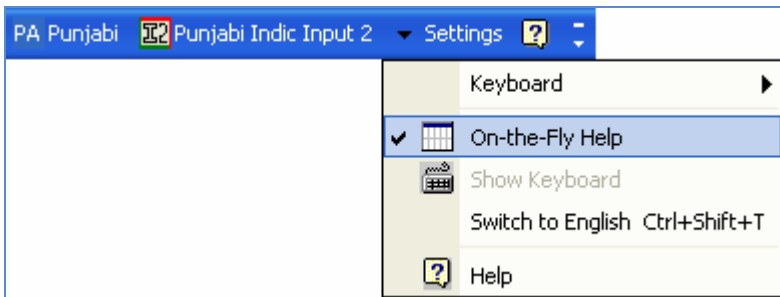
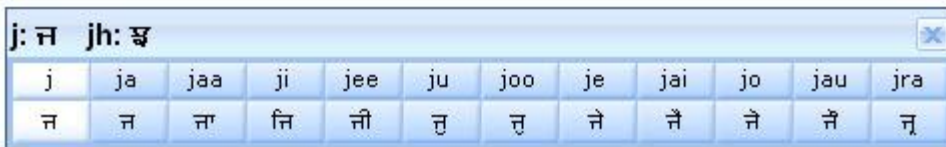
| Special Rules | |
|---|------------------------------|
| To type Roman Numerals (Numbers), use the Numpad Keys of the Keyboard with Caps Lock Key ON. | 1, 2, 3....9, 0. |
| To type Lingual Numerals (Numbers), use the Numpad Keys of the Keyboard with Caps Lock Key OFF. | ੦, ੧, ੨, ੩, ੪, ੫, ੬, ੭, ੮, ੯ |

Tool Setting Options

On-the-fly Help

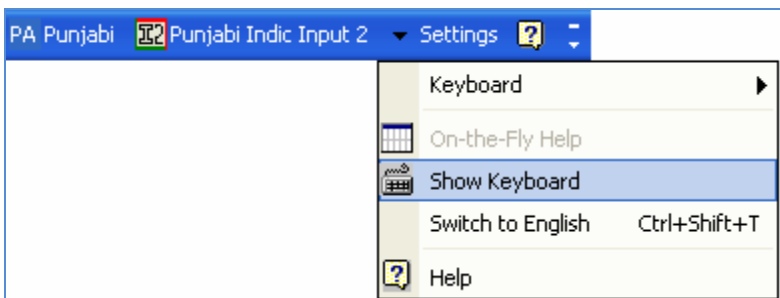
Tool provides the simplest way to type text by using on-the-fly Help. As the user starts typing using transliteration keyboard, he can see the respective letters in selected Indian Language with various matra combinations.

To activate this feature select **On-the-Fly Help** from **Settings** Menu.



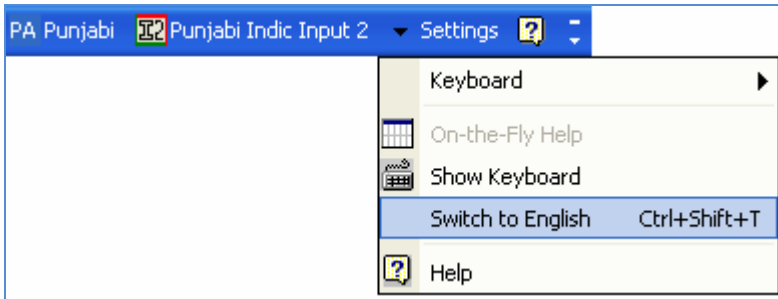
Show Keyboard

To view any keyboard (except Phonetic) select **Show Keyboard** option from **Settings** Menu

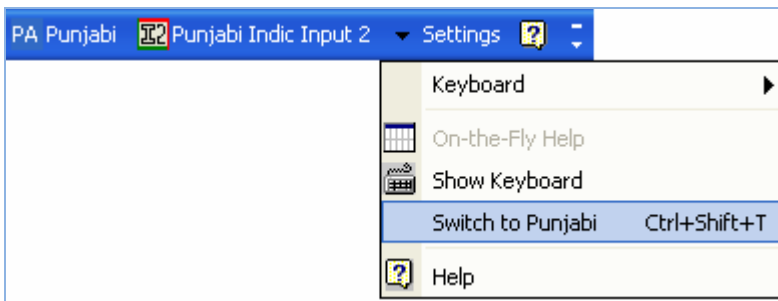


Switch to English/Punjabi

To switch to English Language, select **Switch to English** option from **Settings** Menu or use shortcut key Ctrl+Shift+T.

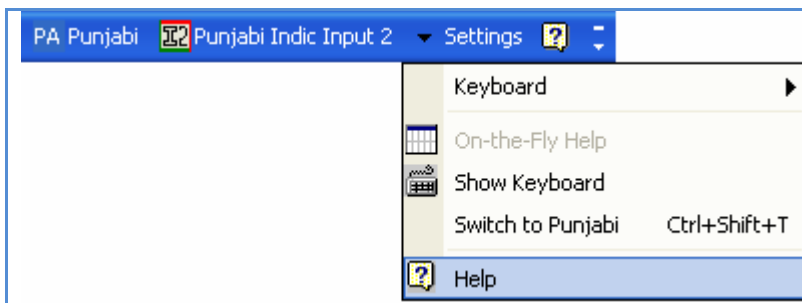


To switch to Punjabi Language again, select **Switch to Punjabi** option from **Settings** Menu or use shortcut key Ctrl+Shift+T.



Help

To view help on Punjabi Indic Input 2 tool, select **Help** from **Settings** Menu.



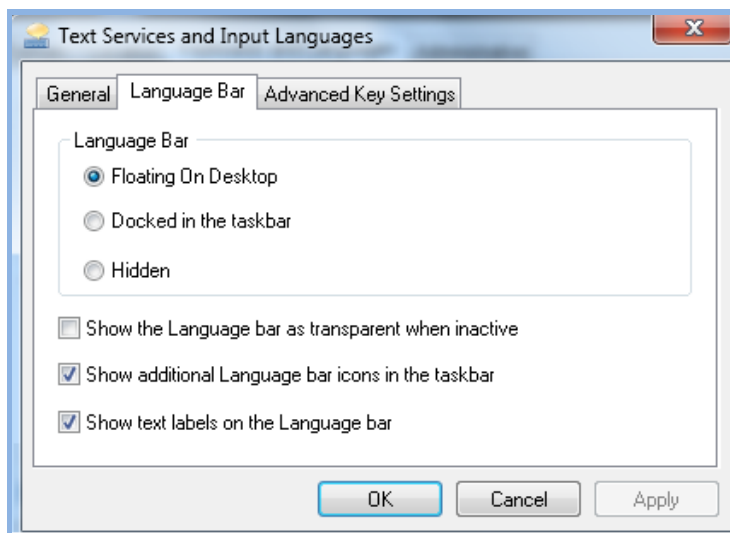
Troubleshooting

1. How can I make Language bar visible on my PC?

Right-click your Desktop taskbar, and point to **Toolbars**. See is **Language bar** selected, if not click on it to select. If Language bar is no longer listed in the toolbar menu try below steps:

VISTA/WINDOWS 7

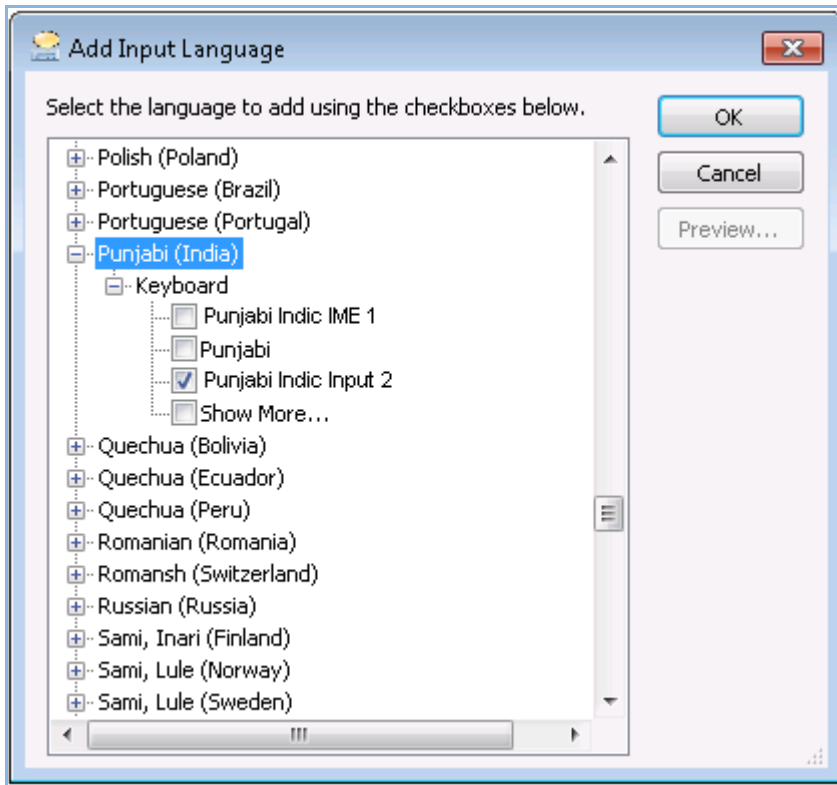
- Go to **Control Panel > Regional and Language Options > Keyboards and Languages (tab) > Change Keyboards > Language Bar**
- Select radio button **Floating on Desktop** or **Docked in the taskbar**.
- Click **OK**.



2. How can I add Punjabi Indic Input 2 on my Language bar?

VISTA/WINDOWS 7

- Go to **Control Panel > Regional and Language Options > Keyboards and Languages (tab) > Change Keyboards > General**.
- Click **Add** button, Select the Language (Punjabi) and under Keyboard section check the box titled **Punjabi Indic Input 2**.
- Click **OK**.



3. I do not want Punjabi Indic Input 2 as the default input method for my PC. What can be done?

VISTA/WINDOWS 7

- Go to **Control Panel > Regional and Language Options > Keyboards and Languages (tab) > Change Keyboards > General**

Check both:

- ✓ You have not selected Punjabi as your **Default Input Language**.
- ✓ You have not selected Punjabi Indic Input 2 as an input method in Language bar.

To Uninstall Punjabi Indic Input 2

Follow the steps below to uninstall the tool.

1. Open Windows **Control Panel** → → **Add/Remove Programs** to remove the program(s).
2. Select **Punjabi Indic Input 2** and click **Remove** button.
3. You will be prompted by a confirmatory message. Select **Yes** to remove the tool completely.

Note: It is recommended to close all running applications before uninstalling the Punjabi Indic Input 2 Tool.