

# Capacity Estimates of TRO Channels

arXiv: 1509.07294 and arXiv: 1609.08594

Li Gao

University of Illinois at Urbana-Champaign

QIP 2017, Microsoft Research, Seattle

Joint work with Marius Junge and Nicholas LaRacuente

# Quantum capacity of a channel

Quantum channel (cptpm)  $\mathcal{N} : \mathbb{B}(H_A) \rightarrow \mathbb{B}(H_B)$

- Stinespring dilation:  $\mathcal{N} : \rho^A \rightarrow \text{tr}_E(V\rho^A V^\dagger)$
- Complementary channel:  $\mathcal{N}^E : \rho^A \rightarrow \text{tr}_B(V\rho^A V^\dagger)$

$$\begin{array}{ccc} H_A & \xrightarrow{V} & H_B \otimes H_E \\ & & \downarrow \\ A & \xrightarrow{\mathcal{N}} & B \\ & \searrow & \downarrow \\ & & \mathcal{N}^E \\ & & E \end{array}$$

# Quantum capacity of a channel

$$\begin{array}{ccc} H_A & \xrightarrow{V} & H_B \otimes H_E \\ & & \downarrow \mathcal{N}^E \\ A & \xrightarrow{\mathcal{N}} & B \\ & & \downarrow \\ & & E \end{array}$$

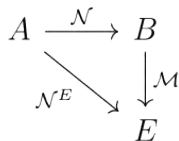
Quantum channel (cptpm)  $\mathcal{N} : \mathbb{B}(H_A) \rightarrow \mathbb{B}(H_B)$

- Stinespring dilation:  $\mathcal{N} : \rho^A \rightarrow \text{tr}_E(V\rho^A V^\dagger)$
- Complementary channel:  $\mathcal{N}^E : \rho^A \rightarrow \text{tr}_B(V\rho^A V^\dagger)$

How many qubits per use of  $\mathcal{N}$  can one transmit over it?

- Coherent information:  $Q^{(1)}(\mathcal{N}) = \sup_{\rho} H(B)_{\sigma} - H(E)_{\sigma}$   
 $\sigma^{BE} = V\rho^A V^\dagger$  and  $H(B)_{\sigma} = -\text{tr}(\sigma^B \log \sigma^B)$ .
- Quantum capacity [Lloyd-Shor-Devetak, 97]:  
 $Q(\mathcal{N}) = \lim_{k \rightarrow \infty} \frac{1}{k} Q^{(1)}(\mathcal{N}^{\otimes k})$
- $\exists \mathcal{N}, Q^{(1)}(\mathcal{N}) < Q(\mathcal{N})$  [DiVincenzo-Shor-Smolin, 98]
- Regularization (the limit) is necessary but hard to compute.
- Qubit depolarizing channel  $\mathcal{D}_{\lambda}(\rho) = (1 - \lambda)\rho + \lambda \frac{1}{2}$ .  
 $Q(\mathcal{D}_{\lambda})$  in general is open.

# Degradable channels



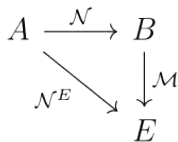
$\mathcal{N}$  is *degradable* if  $\exists \mathcal{M}$  s.t.  $\mathcal{N}^E = \mathcal{M} \circ \mathcal{N}$

- [Devetak-Shor, 05] shows that if  $\mathcal{N}$  is degradable then

$$Q^{(1)}(\mathcal{N}) = Q(\mathcal{N})$$

- Hadamard channel are degradable.  $\mathcal{N}(\rho) = \sum \langle h_i | \rho | h_j \rangle |i\rangle \langle j|$ .

# Degradable channels



$\mathcal{N}$  is *degradable* if  $\exists \mathcal{M}$  s.t.  $\mathcal{N}^E = \mathcal{M} \circ \mathcal{N}$

- [Devetak-Shor, 05] shows that if  $\mathcal{N}$  is degradable then

$$Q^{(1)}(\mathcal{N}) = Q(\mathcal{N})$$

- Hadamard channel are degradable.  $\mathcal{N}(\rho) = \sum \langle h_i | \rho | h_j \rangle |i\rangle \langle j|$ .

## Question

Other (nontrivial) channels which has  $Q^{(1)}(\mathcal{N}) = Q(\mathcal{N})$ ?

## Some general upper bounds on $Q$

- [Smith-Smolín-Winter, 08] Quantum capacity with symmetric side channels
- [Tomamichel-Wilde-Winter, 15] Rains relative entropy
- [Sutter et al, 15] Approximate degradable channels
- [Wang-Duan, 15] A semidefinite programming upper bound

# Some general upper bounds on $Q$

- [Smith-Smolín-Winter, 08] Quantum capacity with symmetric side channels
- [Tomamichel-Wilde-Winter, 15] Rains relative entropy
- [Sutter et al, 15] Approximate degradable channels
- [Wang-Duan, 15] A semidefinite programming upper bound

## New approach

An upper bound via analysis on Stinespring dilation.

# Outline

## 1 Introduction

## 2 Main Results

- Two examples
- TRO channels and their modifications
- Comparison Theorem

## 3 Further Applications

- Private capacity
- Superadditivity
- Strong converse rates



## Example I

Let  $G$  be a finite group and  $\{|g\rangle \mid g \in G\}$  be an orthonormal basis. Denote by  $\lambda(g)$  the unitary  $\lambda(g)|h\rangle = |gh\rangle$ . For a probability distribution  $f$  on  $G$ ,

$$\mathcal{N}_f(\rho) = \sum_g f(g) \lambda(g) \rho \lambda(g)^* .$$

## Example I

Let  $G$  be a finite group and  $\{|g\rangle \mid g \in G\}$  be an orthonormal basis. Denote by  $\lambda(g)$  the unitary  $\lambda(g)|h\rangle = |gh\rangle$ . For a probability distribution  $f$  on  $G$ ,

$$\mathcal{N}_f(\rho) = \sum_g f(g) \lambda(g) \rho \lambda(g)^* .$$

$$\max\{\log |G| - H(f), Q(\mathcal{N}_1)\} \leq Q(\mathcal{N}_f) \leq Q(\mathcal{N}_1) + \log |G| - H(f) .$$

## Example I

Let  $G$  be a finite group and  $\{|g\rangle \mid g \in G\}$  be an orthonormal basis. Denote by  $\lambda(g)$  the unitary  $\lambda(g)|h\rangle = |gh\rangle$ . For a probability distribution  $f$  on  $G$ ,

$$\mathcal{N}_f(\rho) = \sum_g f(g) \lambda(g) \rho \lambda(g)^* .$$

$$\max\{\log |G| - H(f), Q(\mathcal{N}_1)\} \leq Q(\mathcal{N}_f) \leq Q(\mathcal{N}_1) + \log |G| - H(f) .$$

- Not degradable if  $G$  is not commutative.
- $Q(\mathcal{N}_1) =$  logarithm of the largest degree of  $G$ 's irreducible representations.

## Example II

Let  $-1 \leq \alpha \leq 1$ .

$$\mathcal{N}_\alpha \left( \begin{bmatrix} a_{11} & a_{12} & a_{13} & a_{14} \\ a_{21} & a_{22} & a_{23} & a_{24} \\ a_{31} & a_{32} & a_{33} & a_{34} \\ a_{41} & a_{42} & a_{43} & a_{44} \end{bmatrix} \right) = \begin{bmatrix} a_{11} + a_{22} & \alpha a_{13} & \alpha a_{24} \\ \alpha a_{31} & a_{33} & 0 \\ \alpha a_{42} & 0 & a_{44} \end{bmatrix}.$$

$$Q^{(1)}(\mathcal{N}_\alpha) = Q(\mathcal{N}_\alpha) = 1 - h\left(\frac{1+\alpha}{2}\right),$$

where  $h(p) = -p \log p - (1-p) \log(1-p)$  is the binary entropy function.

## Example II

Let  $-1 \leq \alpha \leq 1$ .

$$\mathcal{N}_\alpha \left( \begin{bmatrix} a_{11} & a_{12} & a_{13} & a_{14} \\ a_{21} & a_{22} & a_{23} & a_{24} \\ a_{31} & a_{32} & a_{33} & a_{34} \\ a_{41} & a_{42} & a_{43} & a_{44} \end{bmatrix} \right) = \begin{bmatrix} a_{11} + a_{22} & \alpha a_{13} & \alpha a_{24} \\ \alpha a_{31} & a_{33} & 0 \\ \alpha a_{42} & 0 & a_{44} \end{bmatrix}.$$

$$Q^{(1)}(\mathcal{N}_\alpha) = Q(\mathcal{N}_\alpha) = 1 - h\left(\frac{1+\alpha}{2}\right),$$

where  $h(p) = -p \log p - (1-p) \log(1-p)$  is the binary entropy function.

- Not degradable because the first  $2 \times 2$  block goes to the environment.

# Stinespring space

$\mathcal{N}(\rho^A) = \text{tr}_E(V\rho^A V^*)$  with  $V : H_A \rightarrow H_E \otimes H_B$ .

## Definition

The *Stinespring space* of  $\mathcal{N}$  is defined as  $X^{\mathcal{N}} = VH_A \subset H_B \otimes H_E$ .

- $X^{\mathcal{N}} \cong H_A$  as Hilbert space,.
- $\mathcal{N}$  is determined by  $X^{\mathcal{N}} \subset H_B \otimes H_E$  (up to a unitary equivalence).

# Stinespring space

$$\mathcal{N}(\rho^A) = \text{tr}_E(V\rho^A V^*) \text{ with } V : H_A \rightarrow H_E \otimes H_B.$$

## Definition

The *Stinespring space* of  $\mathcal{N}$  is defined as  $X^{\mathcal{N}} = VH_A \subset H_B \otimes H_E$ .

- $X^{\mathcal{N}} \cong H_A$  as Hilbert space,.
- $\mathcal{N}$  is determined by  $X^{\mathcal{N}} \subset H_B \otimes H_E$  (up to a unitary equivalence).

Via  $H_B \otimes H_E \cong \mathbb{B}(H_E, H_B)$ ,

$$|x\rangle \in H_A \leftrightarrow V|x\rangle \in X^{\mathcal{N}} \leftrightarrow x \in \mathbb{B}(H_E, H_B)$$

$$\mathcal{N}(|x\rangle\langle y|) = xy^\dagger, \quad \mathcal{N}^E(|x\rangle\langle y|) = y^\dagger x.$$

## Stinespring space (cont'd)

Let  $M_{n,m}$  be  $n \times m$  complex matrices and  $M_n = M_{n,n}$ .

a)  $\mathcal{N} = id : M_n \rightarrow M_n$ ,  $X = M_{n,1}$ .  $\mathcal{N} = tr : M_n \rightarrow \mathbb{C}$ ,  $X = M_{1,n}$



## Stinespring space (cont'd)

Let  $M_{n,m}$  be  $n \times m$  complex matrices and  $M_n = M_{n,n}$ .

a)  $\mathcal{N} = id : M_n \rightarrow M_n$ ,  $X = M_{n,1}$ .  $\mathcal{N} = tr : M_n \rightarrow \mathbb{C}$ ,  $X = M_{1,n}$

b)  $\mathcal{N} = id_n \otimes tr_m : M_n \otimes M_m \rightarrow M_n$ ,  $X = M_{n,m}$

## Stinespring space (cont'd)

Let  $M_{n,m}$  be  $n \times n$  complex matrices and  $M_n = M_{n,n}$ .

- $\mathcal{N} = id : M_n \rightarrow M_n$ ,  $X = M_{n,1}$ .  $\mathcal{N} = tr : M_n \rightarrow \mathbb{C}$ ,  $X = M_{1,n}$
- $\mathcal{N} = id_n \otimes tr_m : M_n \otimes M_m \rightarrow M_n$ ,  $X = M_{n,m}$
- Let  $\mathcal{N} = \bigoplus_k id_{n_k} \otimes tr_{m_k}$  be a direct sum of partial traces i.e.

$$\mathcal{N} \left( \begin{bmatrix} \rho_{11} & \cdots & \rho_{1k} \\ \vdots & \ddots & \vdots \\ \rho_{k1} & \cdots & \rho_{kk} \end{bmatrix} \right) = \begin{bmatrix} id_{n_1} \otimes tr_{m_1}(\rho_{11}) & 0 & 0 \\ 0 & \ddots & 0 \\ 0 & 0 & id_{n_k} \otimes tr_{m_k}(\rho_{kk}) \end{bmatrix},$$

$$\text{then } X = \bigoplus M_{n_k, m_k} = \begin{bmatrix} \ddots & & & \\ & M_{n_k, m_k} & & \\ & & \ddots & \\ & & & \ddots \end{bmatrix}.$$

## Stinespring space (cont'd)

Let  $M_{n,m}$  be  $n \times n$  complex matrices and  $M_n = M_{n,n}$ .

- $\mathcal{N} = id : M_n \rightarrow M_n$ ,  $X = M_{n,1}$ .  $\mathcal{N} = tr : M_n \rightarrow \mathbb{C}$ ,  $X = M_{1,n}$
- $\mathcal{N} = id_n \otimes tr_m : M_n \otimes M_m \rightarrow M_n$ ,  $X = M_{n,m}$
- Let  $\mathcal{N} = \bigoplus_k id_{n_k} \otimes tr_{m_k}$  be a direct sum of partial traces i.e.

$$\mathcal{N}\left(\begin{bmatrix} \rho_{11} & \cdots & \rho_{1k} \\ \vdots & \ddots & \vdots \\ \rho_{k1} & \cdots & \rho_{kk} \end{bmatrix}\right) = \begin{bmatrix} id_{n_1} \otimes tr_{m_1}(\rho_{11}) & 0 & 0 \\ 0 & \ddots & 0 \\ 0 & 0 & id_{n_k} \otimes tr_{m_k}(\rho_{kk}) \end{bmatrix},$$

$$\text{then } X = \bigoplus M_{n_k, m_k} = \begin{bmatrix} \ddots & & & \\ & M_{n_k, m_k} & & \\ & & \ddots & \\ & & & \ddots \end{bmatrix}.$$

This is the so-called *conditional expectation*. By [Fukuda-Wolf, 07]

$$Q^{(1)}(\mathcal{N}) = Q(\mathcal{N}) = \log \max_k n_k.$$

# Ternary ring of operators (TRO)

- $X \cong \bigoplus_k (M_{n_k, m_k} \otimes \mathbb{C}1_{l_k})$  is a (finite dimensional) *ternary ring of operators*.

# Ternary ring of operators (TRO)

- $X \cong \bigoplus_k (M_{n_k, m_k} \otimes \mathbb{C}1_{l_k})$  is a (finite dimensional) *ternary ring of operators*.

## Definition [Hestenes, 79]

A *ternary ring of operators* (TRO)  $X$  is a closed subspace of  $\mathbb{B}(H, K)$  such that

$$x, y, z \in X \Rightarrow xy^\dagger z \in X .$$

# Ternary ring of operators (TRO)

- $X \cong \bigoplus_k (M_{n_k, m_k} \otimes \mathbb{C}1_{l_k})$  is a (finite dimensional) *ternary ring of operators*.

## Definition [Hestenes, 79]

A *ternary ring of operators* (TRO)  $X$  is a closed subspace of  $\mathbb{B}(H, K)$  such that

$$x, y, z \in X \Rightarrow xy^\dagger z \in X .$$

We call  $\mathcal{N}$  a *TRO channel* if  $X^{\mathcal{N}}$  is a TRO.

- If  $X^{\mathcal{N}} \cong \bigoplus_k M_{n_k, m_k}$ , then  $\mathcal{N} \cong \bigoplus_k (id_{n_k} \otimes tr_{m_k})$ .

# Modification of TRO channels

Modification by matrix multiplication:

$$\begin{array}{ccccc} H_A & & \mathcal{X}^{\mathcal{N}} & & \mathbb{B}(H_E, H_B) \\ |x\rangle & \xrightarrow{V} & x & \longrightarrow & x \cdot a \end{array}$$

**Question.** When this gives a channel? " $x \rightarrow x \cdot a$ " an isometry?

# Modification of TRO channels

Modification by matrix multiplication:

$$\begin{array}{ccccc} H_A & & X^{\mathcal{N}} & & \mathbb{B}(H_E, H_B) \\ |x\rangle & \xrightarrow{V} & x & \longrightarrow & x \cdot a \end{array}$$

**Question.** When this gives a channel? " $x \rightarrow x \cdot a$ " an isometry?

- The normalized trace  $\tau(\rho) = \frac{1}{n} \text{tr}(\rho)$  on  $M_n$ .
- A positive  $f \in M_n$  is a normalized density if  $\tau(f) = 1$ .

## Definition

Two  $*$ -subalgebra  $\mathcal{A}, \mathcal{B} \subset M_n$  are *independent* if

$$\tau(xy) = \tau(x)\tau(y), x \in \mathcal{A}, y \in \mathcal{B}.$$

An element  $f \in M_n$  is independent of  $\mathcal{A}$  if the  $C^*$ -algebra generated by  $f$  (the closure of all polynomials of  $f$  and  $f^\dagger$ ) is independent of  $\mathcal{A}$ .

**Answer.** When  $f = aa^\dagger$  is a normalized density independent of  $\text{Ran}(\mathcal{N}^E)$ .

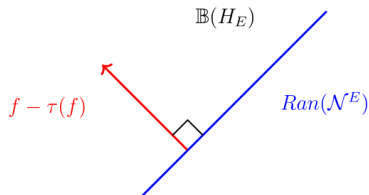


## Modification of TRO channels (cont'd)

Let  $\mathcal{N}$  be a TRO channel  $\mathcal{N}(|x\rangle\langle y|) = xy^\dagger$  and  $f \in \mathbb{B}(H_E)$  be a normalized density independent of  $\text{Ran}(\mathcal{N}^E)$ . Then the map

$$\mathcal{N}_f(|x\rangle\langle y|) = x \cdot f \cdot y^\dagger$$

is again a channel (cftp).



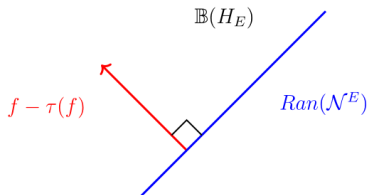
## Modification of TRO channels (cont'd)

Let  $\mathcal{N}$  be a TRO channel  $\mathcal{N}(|x\rangle\langle y|) = xy^\dagger$  and  $f \in \mathbb{B}(H_E)$  be a normalized density independent of  $\text{Ran}(\mathcal{N}^E)$ . Then the map

$$\mathcal{N}_f(|x\rangle\langle y|) = x \cdot f \cdot y^\dagger$$

is again a channel (cftp).

- $\mathcal{N}_1 = \mathcal{N}$ .
- $\mathcal{N}_f$  is a lifting of  $\mathcal{N}$ , i.e.  $\mathcal{E} \circ \mathcal{N}_f = \mathcal{N}$  where  $\mathcal{E}$  is the conditional expectation from  $\mathbb{B}(H_B)$  onto  $\text{Ran}(\mathcal{N})$ .



# Comparison Theorem (main technical result)

Let  $1 < p \leq \infty$  and  $\frac{1}{p} + \frac{1}{p'} = 1$ . Recall  $\|f\|_{\tau,p} = \tau(|f|^p)^{\frac{1}{p}}$ .

## Theorem

Let  $\mathcal{N} : B(H_A) \rightarrow B(H_B)$  be a TRO channel and  $f$  a normalized density independent of  $\text{Ran}(\mathcal{N}^E)$ . For any positive  $\rho \in \mathbb{B}(H_A)$  and  $\sigma \in \text{Ran}(\mathcal{N})$ ,

$$D_p(\mathcal{N}(\rho)||\sigma) \leq D_p(\mathcal{N}_f(\rho)||\sigma) \leq D_p(\mathcal{N}(\rho)||\sigma) + p' \log \|f\|_{\tau,p}$$

Sandwiched Renyi- $p$  divergence:

$$D_p(\rho||\sigma) = \begin{cases} p' \log \|\sigma^{-\frac{1}{2p'}} \rho \sigma^{-\frac{1}{2p'}}\|_p & \text{if } \text{supp}(\rho) \subset \text{supp}(\sigma) \\ +\infty & \text{else} \end{cases}$$

# Sandwiched Rényi- $p$ divergence $D_p$

$\|\rho\|_p = \text{tr}(|\rho|^p)^{\frac{1}{p}}$ . For  $\rho, \sigma \geq 0$ ,

$$D_p(\rho||\sigma) = \begin{cases} p' \log \|\sigma^{-\frac{1}{2p'}} \rho \sigma^{-\frac{1}{2p'}}\|_p & \text{if } \text{supp}(\rho) \subset \text{supp}(\sigma) \\ +\infty & \text{else} \end{cases}$$

- $\lim_{p \rightarrow 1} D_p(\rho||\sigma) = D(\rho||\sigma) := \text{tr}(\rho(\log \rho - \log \sigma))$
- Data processing inequality:  $D_p(\rho||\sigma) \geq D_p(\mathcal{N}(\rho)||\mathcal{N}(\sigma))$ . (will be used)

# Sandwiched Rényi- $\rho$ divergence $D_\rho$

$\|\rho\|_p = \text{tr}(|\rho|^p)^{\frac{1}{p}}$ . For  $\rho, \sigma \geq 0$ ,

$$D_\rho(\rho||\sigma) = \begin{cases} \rho' \log \|\sigma^{-\frac{1}{2\rho'}} \rho \sigma^{-\frac{1}{2\rho'}}\|_p & \text{if } \text{supp}(\rho) \subset \text{supp}(\sigma) \\ +\infty & \text{else} \end{cases}$$

- $\lim_{\rho \rightarrow 1} D_\rho(\rho||\sigma) = D(\rho||\sigma) := \text{tr}(\rho(\log \rho - \log \sigma))$
- Data processing inequality:  $D_\rho(\rho||\sigma) \geq D_\rho(\mathcal{N}(\rho)||\mathcal{N}(\sigma))$ . (will be used)
- Coherent information:  $Q^{(1)}(\mathcal{N}) = \sup_{\rho \in S(AA')} I_c(A'|B)_\sigma$ , where  $\sigma^{A'B} = \text{id}_{A'} \otimes \mathcal{N}(\rho^{AA'})$  and

$$I_c(A|B)_\rho = H(B) - H(AB) = D(\rho^{AB}||1 \otimes \rho^B) = \inf_{\sigma^B} D(\rho^{AB}||1 \otimes \rho^B).$$

# Capacity bounds

## Corollary

$$Q(\mathcal{N}) \leq Q(\mathcal{N}_f) \leq Q(\mathcal{N}) + \tau(f \log f)$$

*In particular,  $Q(\mathcal{N}) = \log \max_k n_k$  if  $X^{\mathcal{N}} = \bigoplus_k (M_{n_k, m_k})$ .*

# Capacity bounds

## Corollary

$$Q(\mathcal{N}) \leq Q(\mathcal{N}_f) \leq Q(\mathcal{N}) + \tau(f \log f)$$

In particular,  $Q(\mathcal{N}) = \log \max_k n_k$  if  $X^{\mathcal{N}} = \bigoplus_k (M_{n_k, m_k})$ .

## Proof.

- Apply the comparison to  $(id \otimes \mathcal{N}_f) = (id \otimes \mathcal{N})_f$ ,

$$D_p(\mathcal{N}(\rho^{AA'}) || \sigma) \leq D_p(\mathcal{N}_f(\rho^{AA'}) || \sigma) \leq D_p(\mathcal{N}(\rho^{AA'}) || \sigma) + p' \log \|f\|_{\tau, p}$$

- Take limit  $p \rightarrow 1$ , choose  $\sigma = 1 \otimes \mathcal{N}(\rho^A)$  and then take supremum over all bipartite states  $\rho^{AA'}$ .

$$Q^{(1)}(\mathcal{N}) \leq Q^{(1)}(\mathcal{N}_f) \leq Q^{(1)}(\mathcal{N}) + \tau(f \log f)$$

- Regularization:  $(\mathcal{N}_f)^{\otimes k} = (\mathcal{N}^{\otimes k})_{f^{\otimes k}}$ ,  $\tau(f^{\otimes k} \log f^{\otimes k}) = k\tau(f \log f)$ .

# Proof of Comparison Theorem

- The lower bound follows from data processing inequality.  $\mathcal{E} \circ \mathcal{N}_f = \mathcal{N}$

$$\Rightarrow D_p(\mathcal{N}_f(\rho) \parallel \sigma) \geq D_p(\mathcal{E} \circ \mathcal{N}_f(\rho) \parallel \mathcal{E}(\sigma)) = D_p(\mathcal{N}(\rho) \parallel \sigma) .$$



# Proof of Comparison Theorem

- The lower bound follows from data processing inequality.  $\mathcal{E} \circ \mathcal{N}_f = \mathcal{N}$

$$\Rightarrow D_p(\mathcal{N}_f(\rho) \|\sigma) \geq D_p(\mathcal{E} \circ \mathcal{N}_f(\rho) \|\mathcal{E}(\sigma)) = D_p(\mathcal{N}(\rho) \|\sigma) .$$

- Upper bound via complex interpolation.

- ▶ Consider the right matrix multiplication:  $x \rightarrow x \cdot a$

- ▶ Complex interpolation (Stein's theorem).

$$\|xa\|_\infty \leq \|x\|_\infty \|a\|_\infty, \|xa\|_2 = \|x\|_2 \|a\|_{2,\tau} \text{ (independence).}$$

$$\Rightarrow \|xa\|_{2p} \leq \|x\|_{2p} \|a\|_{2p,\tau} .$$

- ▶ Let  $\rho = \eta\eta^\dagger$  and  $f = aa^\dagger$ . Then  $\|f\|_p = \|a\|_{2p}^2$  and

$$\|\sigma^{-\frac{1}{2p'}} \mathcal{N}_f(\rho) \sigma^{-\frac{1}{2p'}}\|_p = \|\sigma^{-\frac{1}{2p'}} \eta a\|_{2p}^2$$

$$\leq \|\sigma^{-\frac{1}{2p'}} \eta\|_{2p}^2 \|a\|_{2p,\tau}^2 = \|\sigma^{-\frac{1}{2p'}} \mathcal{N}(\rho) \sigma^{-\frac{1}{2p'}}\|_p \|f\|_{\tau,p}$$

# Capacity bounds

## Corollary

$$Q(\mathcal{N}) \leq Q(\mathcal{N}_f) \leq Q(\mathcal{N}) + \tau(f \log f)$$

In particular, if  $X^{\mathcal{N}} = \bigoplus_k (M_{n_k, m_k})$ ,  $Q(\mathcal{N}) = \log \max_k n_k$ .

## Remarks.

- Entropy with respect to  $\tau$ :

$$\lim_{p \rightarrow 1} p' \log \|f\|_p = \tau(f \log f) = \log |E| - H\left(\frac{1}{|E|} f\right)$$

- “Local” comparison: for any subspace  $A_0 \subset A$ ,

$$Q(\mathcal{N}|_{A_0}) \leq Q(\mathcal{N}_f|_{A_0}) \leq Q(\mathcal{N}|_{A_0}) + \tau(f \log f).$$

# Outline

- 1 Introduction
- 2 Main Results
  - Two examples
  - TRO channels and their modifications
  - Comparison Theorem
- 3 Further Applications
  - Private capacity
  - Superadditivity
  - Strong converse rates

# Classical private capacity of a channel

The private capacity of  $\mathcal{N}$  is

$$P(\mathcal{N}) = \lim_k \frac{1}{k} P^{(1)}(\mathcal{N}^{\otimes k}), \quad P^{(1)}(\mathcal{N}) = \sup_{\rho^{XA}} I(X:B)_\sigma - I(X:E)_\sigma,$$

where  $I(A:B) = H(A) + H(B) - H(AB)$ , and  $\sigma^{XBE} = \sum_x p(x) |x\rangle\langle x| \otimes V \rho_x^A V^\dagger$ .

# Classical private capacity of a channel

The private capacity of  $\mathcal{N}$  is

$$P(\mathcal{N}) = \lim_k \frac{1}{k} P^{(1)}(\mathcal{N}^{\otimes k}), \quad P^{(1)}(\mathcal{N}) = \sup_{\rho^{XA}} I(X:B)_\sigma - I(X:E)_\sigma,$$

where  $I(A:B) = H(A) + H(B) - H(AB)$ , and  $\sigma^{XBE} = \sum_x p(x) |x\rangle\langle x| \otimes V \rho_x^A V^\dagger$ .

- $P^{(1)}(\mathcal{N}) < P(\mathcal{N})$  possible [Smith-Renes-Smolin, 08]
- $Q^{(1)}(\mathcal{N}) \leq P^{(1)}(\mathcal{N})$  and  $Q(\mathcal{N}) \leq P(\mathcal{N})$  (1 ebit  $\Rightarrow$  1 kbit).
- For degradable channels,  $Q^{(1)}(\mathcal{N}) = Q(\mathcal{N}) = P^{(1)}(\mathcal{N}) = P(\mathcal{N})$ .  
[Smolin, 08]

## Corollary

$$Q(\mathcal{N}) = P(\mathcal{N}) \leq P(\mathcal{N}_f) \leq P(\mathcal{N}) + \tau(f \log f) = Q(\mathcal{N}) + \tau(f \log f)$$

# Superadditivity

- [Winter-Yang, 16] introduced the potential capacities

$$Q^{(p)}(\mathcal{N}) = \sup_{\mathcal{M}} Q^{(1)}(\mathcal{N} \otimes \mathcal{M}) - Q^{(1)}(\mathcal{M}),$$

$$P^{(p)}(\mathcal{N}) = \sup_{\mathcal{M}} P^{(1)}(\mathcal{N} \otimes \mathcal{M}) - P^{(1)}(\mathcal{M}).$$

- $\mathcal{N}$  is *strongly additive* for  $Q^{(1)}$  (resp.  $P^{(1)}$ ) iff  $Q^{(p)}(\mathcal{N}) = Q^{(1)}(\mathcal{N})$  (resp.  $P^{(p)}(\mathcal{N}) = P^{(1)}(\mathcal{N})$ ).

# Superadditivity

- [Winter-Yang, 16] introduced the potential capacities

$$Q^{(p)}(\mathcal{N}) = \sup_{\mathcal{M}} Q^{(1)}(\mathcal{N} \otimes \mathcal{M}) - Q^{(1)}(\mathcal{M}),$$

$$P^{(p)}(\mathcal{N}) = \sup_{\mathcal{M}} P^{(1)}(\mathcal{N} \otimes \mathcal{M}) - P^{(1)}(\mathcal{M}).$$

- $\mathcal{N}$  is *strongly additive* for  $Q^{(1)}$  (resp.  $P^{(1)}$ ) iff  $Q^{(p)}(\mathcal{N}) = Q^{(1)}(\mathcal{N})$  (resp.  $P^{(p)}(\mathcal{N}) = P^{(1)}(\mathcal{N})$ ).

## Corollary

$$\begin{aligned} Q(\mathcal{N}) = Q^{(p)}(\mathcal{N}) &\leq Q^{(p)}(\mathcal{N}_f) \leq P^{(p)}(\mathcal{N}_f) \leq P^{(p)}(\mathcal{N}) + \tau(f \log f) \\ &= Q(\mathcal{N}) + \tau(f \log f) \end{aligned}$$

- Observe that  $\mathcal{N}_f \otimes \mathcal{M} = (\mathcal{N} \otimes \mathcal{M})_{f \otimes 1}$ .

# Strong converse rates

Let  $P^\dagger$  (resp.  $Q^\dagger$ ) denote the smallest strong converse rate for private (resp. quantum) communication.

- [Wilde-Tomamichel-Berta, 16] shows that for any channel

$$P^\dagger(\mathcal{N}) \leq E_R(\mathcal{N}),$$

where  $E_R$  the relative entropy of entanglement

$$E_R(\mathcal{N}) = \sup_{\rho} E_R(\text{id} \otimes \mathcal{N}(\rho)), E_R(\rho^{AB}) = \inf_{\sigma \in S(A:B)} D(\rho || \sigma).$$



# Strong converse rates

Let  $P^\dagger$  (resp.  $Q^\dagger$ ) denote the smallest strong converse rate for private (resp. quantum) communication.

- [Wilde-Tomamichel-Berta, 16] shows that for any channel

$$P^\dagger(\mathcal{N}) \leq E_R(\mathcal{N}),$$

where  $E_R$  the relative entropy of entanglement

$$E_R(\mathcal{N}) = \sup_{\rho} E_R(\text{id} \otimes \mathcal{N}(\rho)), \quad E_R(\rho^{AB}) = \inf_{\sigma \in \mathcal{S}(A:B)} D(\rho || \sigma).$$

## Corollary

$E_R(\mathcal{N}_f) \leq E_R(\mathcal{N}) + \tau(f \log f)$ ,  $E_R(\mathcal{N}) = Q(\mathcal{N})$  and in particular

$$Q(\mathcal{N}) \leq Q^\dagger(\mathcal{N}_f) \leq P^\dagger(\mathcal{N}_f) \leq Q(\mathcal{N}) + \tau(f \log f)$$

## Final Example

Write  $\rho = \begin{bmatrix} \rho_{11} & \cdots & \rho_{14} \\ \vdots & \ddots & \vdots \\ \rho_{41} & \cdots & \rho_{44} \end{bmatrix}$  with  $\rho_{jk}$  being  $4 \times 4$  matrices.

$$\mathcal{N}_f(\rho) = \sum_{1 \leq j, k \leq 4} \text{tr}(\rho_{jk} f_{jk}) |j\rangle\langle k|$$

where  $f = \begin{bmatrix} 1 & \alpha_3 Z \otimes Z & -i\alpha_2 Y \otimes Y & \alpha_1 X \otimes X \\ \alpha_3 Z \otimes Z & 1 & \alpha_1 X \otimes X & -i\alpha_2 Y \otimes Y \\ i\alpha_2 Y \otimes Y & \alpha_1 X \otimes X & 1 & -\alpha_3 Z \otimes Z \\ \alpha_1 X \otimes X & i\alpha_2 Y \otimes Y & -\alpha_3 Z \otimes Z & 1 \end{bmatrix}$ .

$X, Y, Z$  Pauli matrices.

## Final Example

Write  $\rho = \begin{bmatrix} \rho_{11} & \cdots & \rho_{14} \\ \vdots & \ddots & \vdots \\ \rho_{41} & \cdots & \rho_{44} \end{bmatrix}$  with  $\rho_{jk}$  being  $4 \times 4$  matrices.

$$\mathcal{N}_f(\rho) = \sum_{1 \leq j, k \leq 4} \text{tr}(\rho_{jk} f_{jk}) |j\rangle\langle k|$$

$$\text{where } f = \begin{bmatrix} 1 & \alpha_3 Z \otimes Z & -i\alpha_2 Y \otimes Y & \alpha_1 X \otimes X \\ \alpha_3 Z \otimes Z & 1 & \alpha_1 X \otimes X & -i\alpha_2 Y \otimes Y \\ i\alpha_2 Y \otimes Y & \alpha_1 X \otimes X & 1 & -\alpha_3 Z \otimes Z \\ \alpha_1 X \otimes X & i\alpha_2 Y \otimes Y & -\alpha_3 Z \otimes Z & 1 \end{bmatrix}.$$

$X, Y, Z$  Pauli matrices.

$$\begin{aligned} Q^{(1)}(\mathcal{N}_f) &= P^{(1)}(\mathcal{N}_f) = Q^\dagger(\mathcal{N}_f) = P^\dagger(\mathcal{N}_f) \\ &= Q^{(\rho)}(\mathcal{N}_f) = P^{(\rho)}(\mathcal{N}_f) = 1 - h\left(\frac{1 + |\alpha|}{2}\right). \end{aligned}$$

where  $|\alpha| = \sqrt{|\alpha_1|^2 + |\alpha_2|^2 + |\alpha_3|^2} \leq 1$  (Bloch sphere).

# Summary

- TRO channels are orthogonal sums of partial traces.
- Using analysis on Stinespring space, we give capacities estimates on modifications of TRO channels.
- Examples wit nonzero capacity that is strongly additive, has strong converse but not degradable.

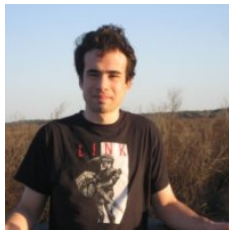
# Summary

- TRO channels are orthogonal sums of partial traces.
- Using analysis on Stinespring space, we give capacities estimates on modifications of TRO channels.
- Examples wit nonzero capacity that is strongly additive, has strong converse but not degradable.

## Thanks!



Marius Junge



Nicholas LaRacunte